

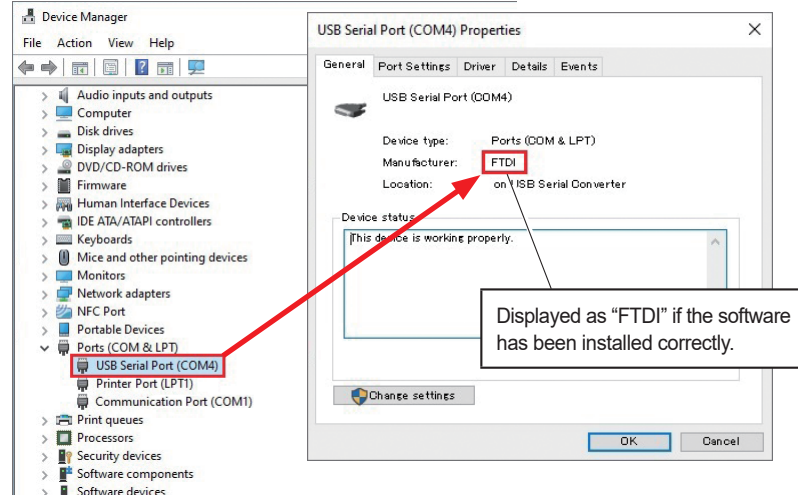
# HAKKO Quick Manual Electrostatic Management System for FG-465

## What to do immediately after installation

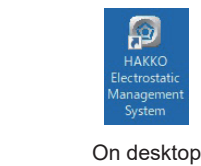
### USB port connection

- Connect the PC and FG-465 with the USB cable included with FG-465.
- Confirm the "USB Serial port" COM number on the Device Manager.

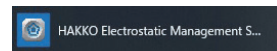
**Note** Use the Windows Search or right-click the start button to select Device Manager.



- Launch the software.



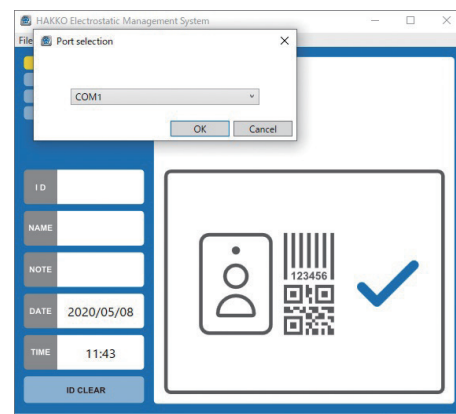
On desktop



Select from app list

- Select the COM number confirmed in (1).

**Note** The following window is displayed when the software is launched for the first time.



### Password setting

- Open one item from the Management menu immediately after installation.
- You will be required to set a password.
- Set your password.

**Note**

- Once the password is set, you will be required to input your password when applying changes to the Management menu. Securely store your password.
- Reinstall the software if you forgot your password.

**HAKKO**  
HAKKO CORPORATION  
HEAD OFFICE

4-5, Shiokusa 2-chome, Naniwa-ku, Osaka 556-0024 JAPAN  
TEL: +81-6-6561-3225 FAX: +81-6-6561-8466  
https://www.hakko.com E-mail: sales@hakko.com

Please access the web address below for other distributors.  
<https://www.hakko.com>

© 2020-2021 HAKKO Corporation. All Rights Reserved.  
Company and product names are trademarks or registered trademarks of their respective companies.

2021.8  
MA03188XZ210820

## Menu list

### File

#### Port selection

Used for initial settings and port reconnection.

#### Reconnect

Used to reconnect FG-465 and PCs.

#### Exit

Used when exiting software.

### Setting

#### Language: Japanese/English/Chinese

Select one of these languages.

#### FG-470 Connection: Yes/No

Select [Yes] if you want to connect FG-470.

**Note** An optional connecting cable is required.

#### ID Input: Yes/No

If [Yes] is selected, "ID" and "NAME" input becomes available. (Figures 2 and 3)  
If [No] is selected, input only to "NOTE" will be available. (Figure 1)

#### Name auto input: Yes/No

If [Yes] is selected, "NAME" is automatically displayed simply by manually inputting an ID. (Figure 2)  
If [No] is selected, "ID," "NAME," and "NOTE" must be input manually. (Figure 3)

#### ID Input device: USB (HID)/FeliCa (IDm)

Select an input device you want to use.

**Note** Simultaneous input from USB-HID devices is available even if FeliCa is selected.

### Management

#### File storage location: Record file/Backup file/Name registration file

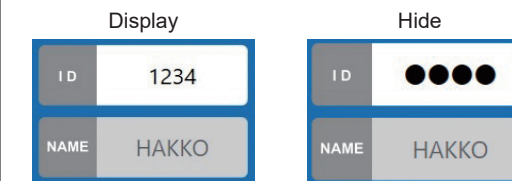
File location can be changed from the location where installed.  
(Refer to "Instruction Manual 2-1 File Type")

#### Create backup file: Yes/No

Select [No] if unnecessary.

#### ID display: Display/Hide

Select [Hide] if unnecessary.



#### Change password

You can change passwords.

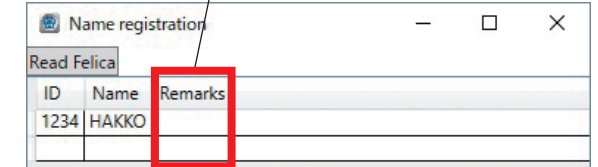
#### Name registration: Registration/Import/Export

To automatically display "NAME" when ID is manually input, select [Registration] and register. (Figure 4)  
Registration by importing existing data is available. Exporting of registered data is also available.

#### Data output by registered user

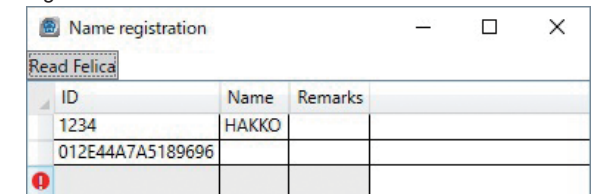
Enables extraction of data by specifying ID, pass/fail results, and period from record files. (Figure 5)

Figure 4-1



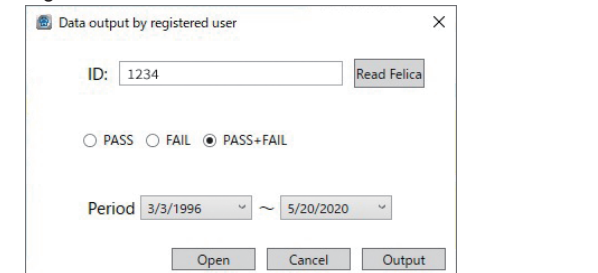
- Adding an ID and pressing the [enter] key moves the cursor to the next row. Input through an ID input device selected in the Setting menu is also available.
- You can delete selected rows with the [delete] key.
- An error will occur if an invalid ID (blank/duplicate) is input.
- Maximum number of ID that can be registered is 10,000.
- Refer to "Instruction Manual 7-5-1 Registration" for details.

Figure 4-2

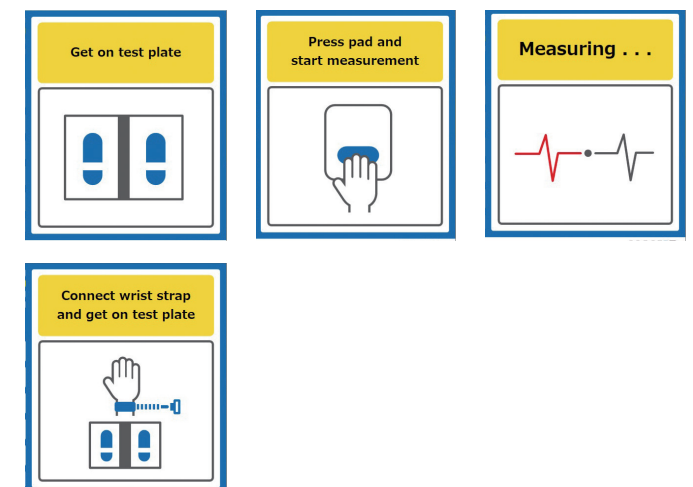


- An error mark is displayed when reading with FeliCa fails. In this case, stop the procedure and start from the beginning.

Figure 5



Example of measurement instructions or during measurement



Example of measurement result

