



Please refer to the instruction manual of the HAKKO FM-206 Rework System when used in conjunction with the HAKKO FM-2030.

Tip (not included)

HAKKO FM-2030

Connecting cable

Heat resistant pad

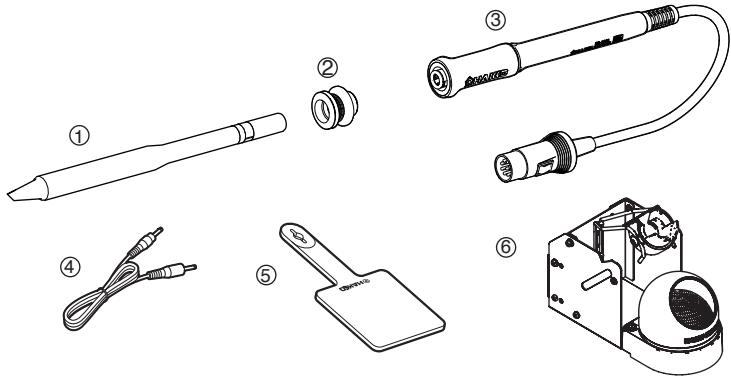
Iron holder

A line drawing diagram showing the back of the device with a power cord plugged into the power jack. A separate power adapter is shown to the right, with its own power cord plugged into it. A line connects the power adapter's output to the power jack on the back of the device.

A diagram of a circular connector with 8 pins. The pins are numbered 1 through 8. Pin 1 is at the top right, pin 2 is at the top, pin 3 is at the top left, pin 4 is at the left, pin 5 is at the bottom left, pin 6 is at the bottom, pin 7 is at the bottom right, and pin 8 is at the center.

➡ <https://doc.hakko.com>

8. PARTS LIST

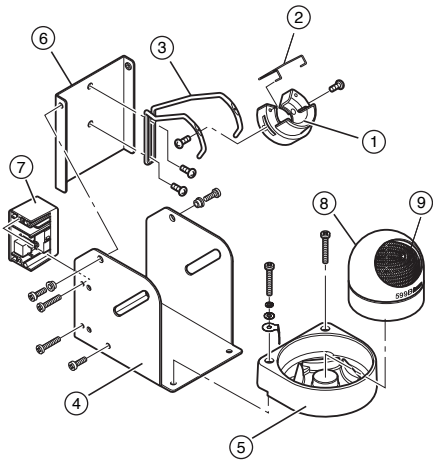


●HAKKO FM-2030

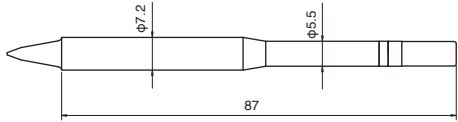
Item No.	Part No.	Part Name	Specifications
①		Tip	See "TIP STYLES"
②	B3687	Nipple	With O-ring
② ③	FM2030-01	HAKKO FM-2030	24V-140W
② ③ ④ ⑤ ⑥	FM2030-04	HAKKO FM-2030	24V-140W Conversion kit
④	B3253	Connecting cable	
⑤	B2300	Heat resistant pad	
⑥	FH200-01	Iron holder	

●Iron Holder

Item No.	Part No.	Part Name	Specifications
①	B3001	Iron receptacle	With screws
②	B2791	Retaining clip	
③	B3248	Holder for iron receptacle	
④	B3251	Iron holder base	With rubber foot
⑤	B3249	Cleaner base	With rubber foot
⑥	B3250	Stay	
⑦	B3252	Switch case assembly	
⑧	599B-02	Tip cleaner	
⑨	599-029	Cleaning wire	

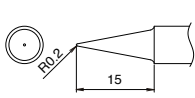


9. TIP STYLES

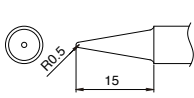


Unit : mm

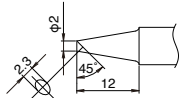
T22-BL SHAPE-BL



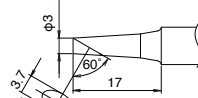
T22-BL2 SHAPE-2BL



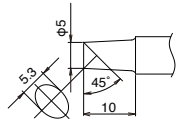
T22-BC2 SHAPE-2BC



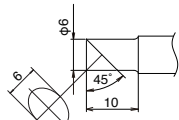
T22-C3 SHAPE-3C



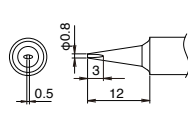
T22-C5 SHAPE-5C



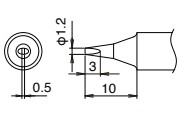
T22-C6 SHAPE-6C



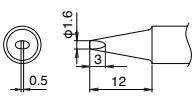
T22-D08 SHAPE-0.8D



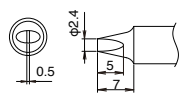
T22-D12 SHAPE-1.2D



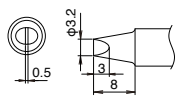
T22-D16 SHAPE-1.6D



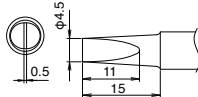
T22-D24 SHAPE-2.4D



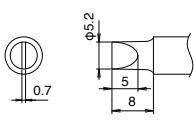
T22-D32 SHAPE-3.2D



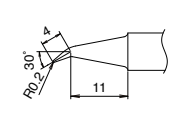
T22-D45 SHAPE-4.5D



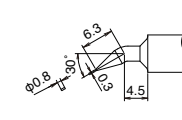
T22-D52 SHAPE-5.2D



T22-J02 SHAPE-0.2J



T22-JD08 SHAPE-0.8JD



T22-K SHAPE-K

