

Table of the combination for the auto-solder feed system

Soldering station + Handpiece	Solder diameter (φ): mm	Guide pipe assembly	Tube unit	Iron receptacle	Solder feed unit
FX-951 FX-950 FM-203 FM-206 FM-2028 FM-2027	0.6, 0.65	B5268	C5056	B5265	HAKKO 373
	0.8	B5269			
	1	B5270			
	1.2	B5271			
FX-100 FX-1001	0.6, 0.65	B5268	C5056	B5266	
	0.8	B5269			
	1	B5270			
	1.2	B5271			
FN-1010 FX-801 FX-838 FM-203 FM-206 FN-1101 FX-8002 FX-8301 FM-2030	0.6, 0.65	B5272	C5058	B5265	
	0.8	B5273			
	1	B5274			
	1.2	B5275			
FX-888D FX-889 FX-8801 FX-8805	0.6, 0.65	B5272	C5058	B5267	
	0.8	B5273			
	1	B5274			
	1.2	B5275	C5059		

For more information on the combinations ▶

https://www.hakko.com/english/images/PDF/373_374_option_parts.pdf

Tip Cleaner FT-720

Packing list

- Unit (w/ adjuster)
- AC adapter
- Instruction manual

Compatible irons and tips with FT-720

For more information ▶

https://www.hakko.com/english/products/hakko_ft720_set.html#iron

Replacement and optional parts

Part No.	Name	Specifications
A5063	Cleaning brush C	Fluoroplastic brush, qty 2
A1566	Cleaning brush A	Plastic brush, qty 2
A1567	Cleaning brush B	Metal brush, qty 2
A5062	Sensor cover	qty 10
A5061	Adjuster	

Specifications

Rating	24 VDC 140 mA
Brush rotational speed	1670 rpm
Dimensions	67(W) × 63(H) × 94(D) mm
Weight	200 g

AC adapter

Output voltage	24 VDC
----------------	--------

CA00557EaYa003 2021.1

HAKKO CORPORATION
OVERSEAS AFFILIATES

HEAD OFFICE
4-5, SHIOKUSA 2-CHOME, NANIWA-KU, OSAKA, 556-0024 JAPAN
TEL:+81-6-6561-3225 FAX:+81-6-6561-8466
<https://www.hakko.com> E-mail:sales@hakko.com

U.S.A.
AMERICAN HAKKO PRODUCTS, INC.
28920 AVENUE WILLIAMS VALENCIA, CA 91355, U.S.A.
TEL: (661) 294-0090 FAX: (661) 294-0096
Toll Free (800)88-HAKKO
<https://www.hakko.com>
E-mail:Support@HakkoUSA.com

HONG KONG
HAKKO DEVELOPMENT CO., LTD.
ROOM 1504, EASTERN HARBOUR CENTRE,
28 HOI CHAK STREET, QUARRY BAY, HONG KONG.
TEL: 2811-5588 FAX: 2590-0217
<https://www.hakko.com.cn>
E-mail:info@hakko.com.hk

SINGAPORE
HAKKO PRODUCTS PTE LTD
1, GENTING LINK #02-04
PERFECT ONE, SINGAPORE 349518
TEL: 6748-2277 FAX: 6744-0033
<https://www.hakko.com.sg>
E-mail:sales@hakko.com.sg

Please access the web address below for other distributors.
<https://www.hakko.com>

Specifications and design are subject to change without notice. Copyright HAKKO Corporation. All right reserved.

The New Solution to Improve Soldering Process

Reduce Time for Tip Cleaning
Increase Efficiency in Soldering Process

One-Handed Soldering with No Loss of Efficiency



The Optional Parts for the Auto-Solder Feed System

Tip Cleaner **FT-720**

Tube Unit + Guide Pipe Assembly

Gain more productive time in the soldering process!

The impact of "tip cleaning in the soldering process" on the production time shall not be underestimated. FT-720 equipped with an infrared sensor quickly cleans a tip with the rotating brushes. More time for production can be secured.

Reduce Time for Tip Cleaning
Increase Efficiency
in Soldering Process

Tip Cleaner **FT-720**



The new optional parts make it possible to feed solder from the underside of the tip just like manual soldering and obtain "heat-bridge effect" in which molten solder helps heat transfer to enable ideal soldering.

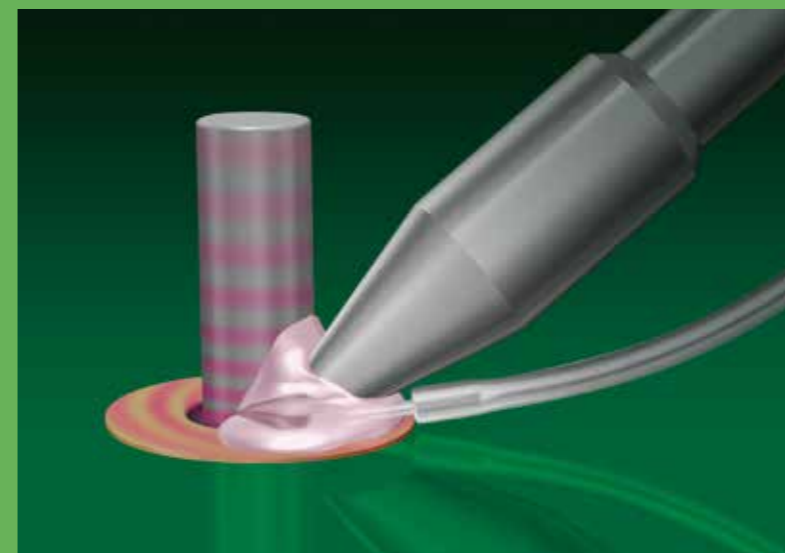
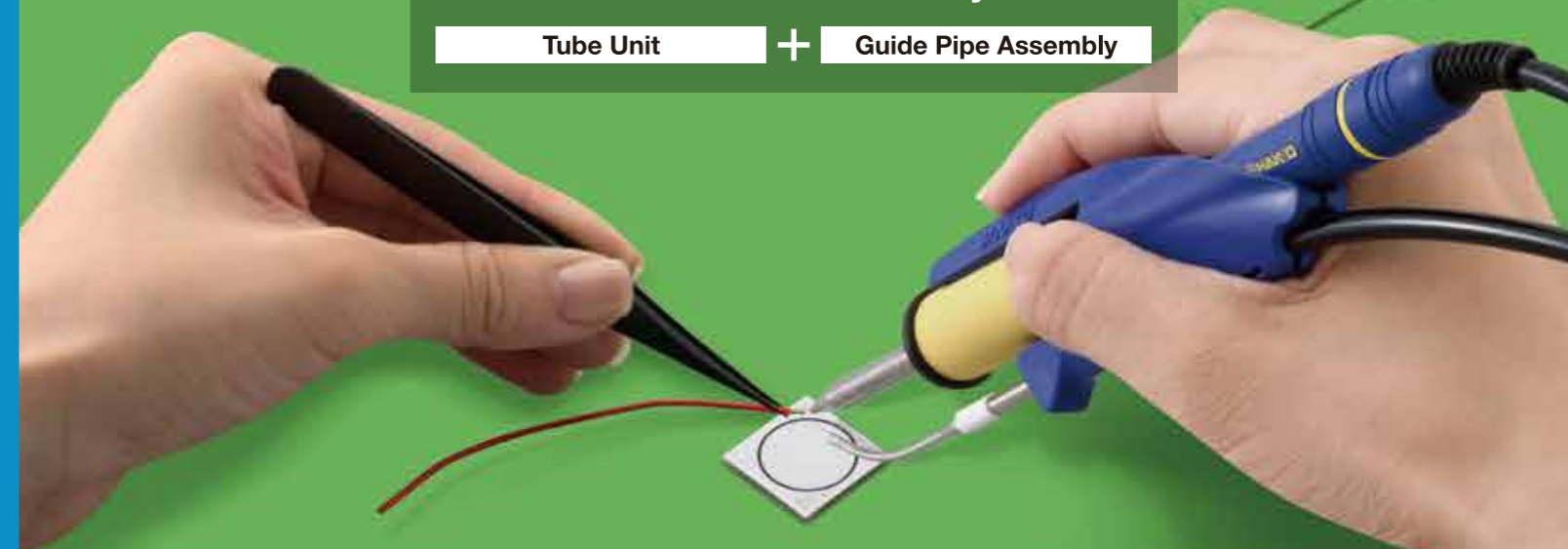
One-Handed Soldering
with No Loss of Efficiency

The Optional Parts
for the Auto-Solder Feed System

Tube Unit

+

Guide Pipe Assembly



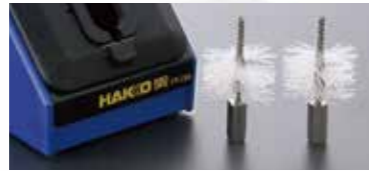
Tip Cleaner FT-720

The demonstration video of a tip cleaning with FT-720 ▶



Quick Tip Cleaning

As the infrared sensor detects a tip being inserted, the brushes start rotating automatically. The quick tip cleaning helps improve soldering process. The new brush is made of fluoroplastic. The brush lasts about 3 times longer and reduces the running cost by about 40% compared to the brush made of metal.

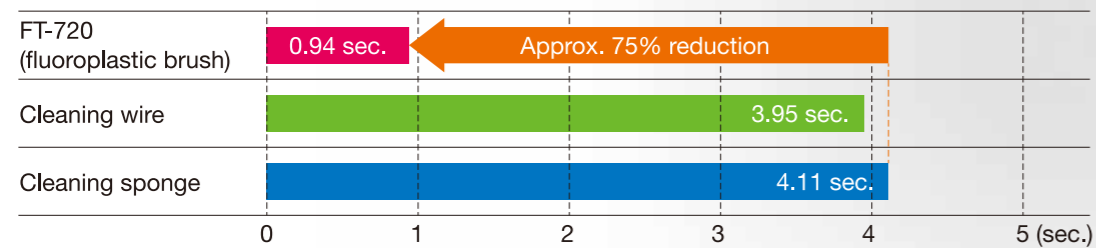


FT-720 (fluoroplastic brush)



Cleaning wire Cleaning sponge

Comparison of Cleaning Time

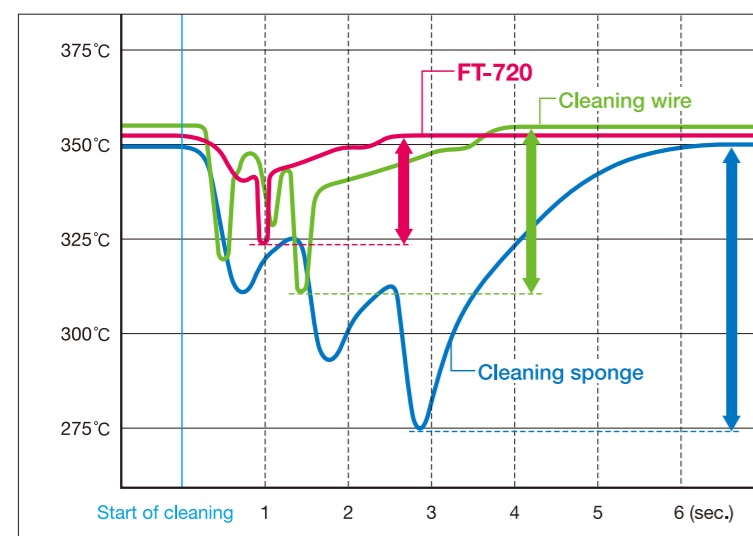


* The above values are measured values and not guaranteed values.

Minimizing Tip Temperature Drop

Tip temperature drops a lot when cleaning with wet sponge and so it takes more time for temperature recovery. FT-720 can help increase productivity by shortening the cleaning time and minimizing the tip temperature drop with no use of water.

Comparison of the Tip Temperature Drop



* The above values are measured values and not guaranteed values.

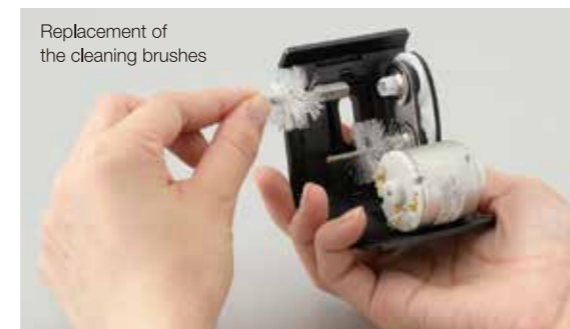
Easy Maintenance

Solder waste can be easily removed just by taking off the cover. No tool is required to remove the brushes.

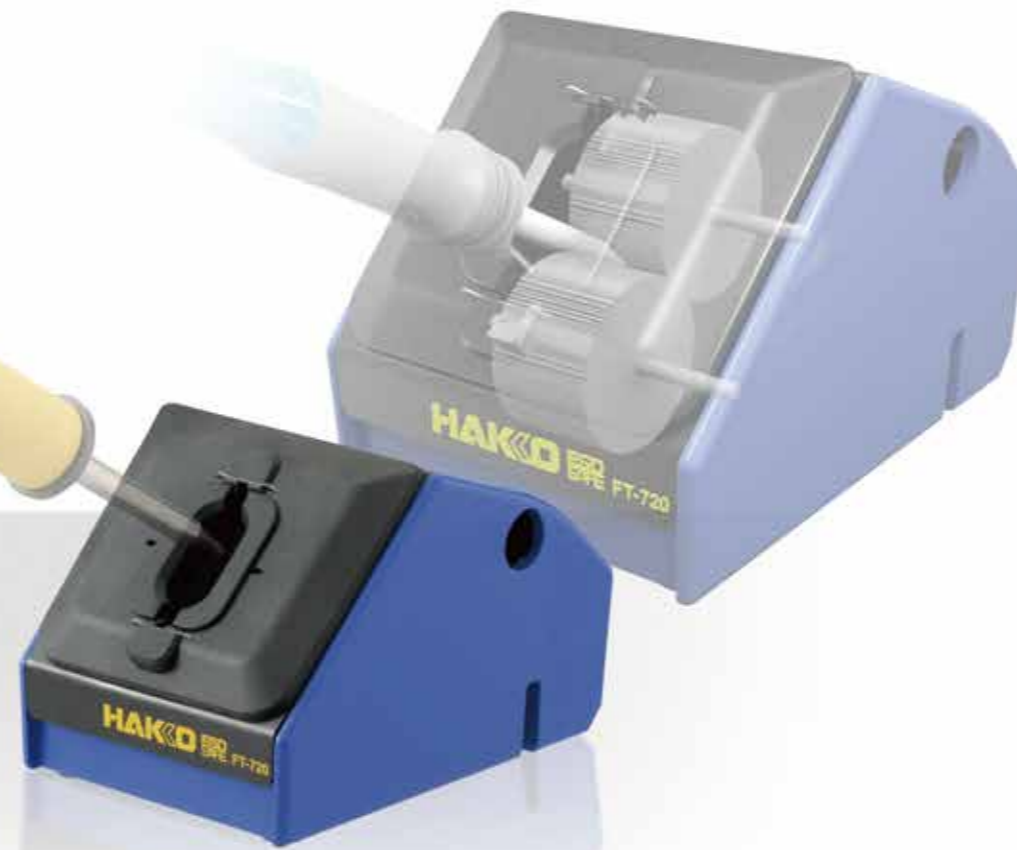


Removal of solder waste

* The safety design requires removal of the AC adapter to take off the cover.



Replacement of the cleaning brushes



Cleaning a Variety of Tip Shapes

Brushes can clean a variety of tip shapes. Even tips with complex shapes that is difficult to clean with a sponge can be well cleaned. FT-720 cleans a tip even having the guide pipe assembly on a handpiece.

Before cleaning



K-type

After cleaning



Concave-type



Reduction of Solder Balls

The narrow opening of the front cover reduces scattering of solder balls. FT-720 helps keep the work environment nice and clean. (FOD prevention)



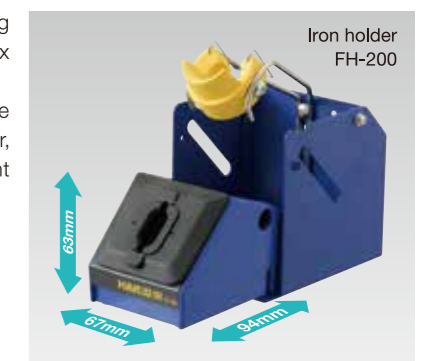
Manual cleaning with wet sponge



Cleaning with FT-720

The Compact Design

The unit is space-saving compact size as 67(W) x 63(H) x 94(D) mm. It is also designed to be installed on the iron holder, FH-200, to make efficient use of the workspace.



Iron holder FH-200

The Adjustable Opening Size

By removing the adjuster, the opening can be wider to accept bigger size tips.



The Solder Ball-Free Tip Cleaner is also available.

Block-by-Insert Type Tip Cleaner

FT-710

The opening will be blocked as an iron is inserted and scattering of solder balls will be completely prevented. The brush type cleaner cleans a tip quickly.



The Optional Parts for the Auto-Solder Feed System

Tube Unit



Guide Pipe Assembly

The introduction video of the new tube unit and the guide pipe assembly ▶



Heat-Bridge Effect

The combination of the new tube unit and the new guide pipe assembly feeds solder from the underside of the tip and makes it possible to obtain "Heat-Bridge Effect" in which molten solder helps heat transfer to enable ideal soldering.

What is a "Heat-Bridge"?

It is the phenomenon that the heat from the tip being transferred quickly to soldering joint area via molten solder.



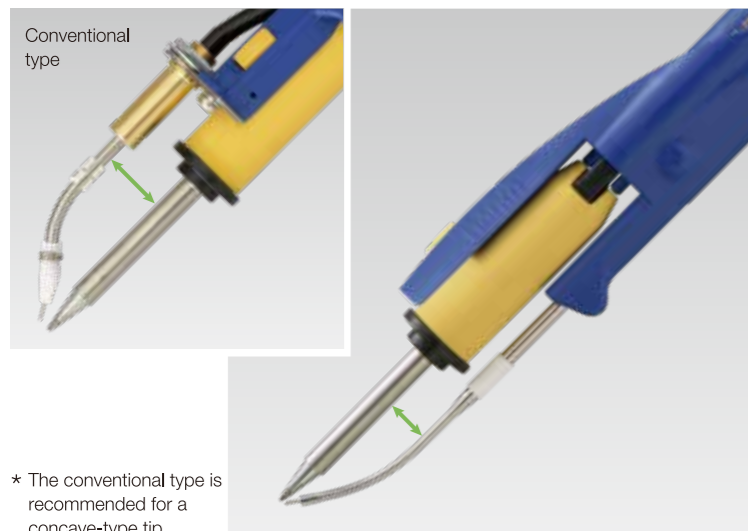
The new optional parts make it possible to feed solder from the underside of the tip just like manual soldering and obtain "Heat-Bridge Effect" in which molten solder helps heat transfer to enable ideal soldering.

The new optional parts make it possible to feed solder from the underside of the tip just like manual soldering and obtain "Heat-Bridge Effect" in which molten solder helps heat transfer to enable ideal soldering.



Pursuing the Best Productivity Enables the Ideal Soldering Process

The new optional parts are **designed to feed solder from the underside of the tip**. Because the new guide pipe assembly is **designed to be set at closer to the tip**, the size of the iron with it is smaller than the iron with the conventional guide pipe assembly, and it improves the handling of the iron. The one-handed soldering just like manual soldering can be achieved.



* The conventional type is recommended for a concave-type tip.

Easy Maintenance

The maintenance of the new guide pipe assembly is easy because **it will have less residue of flux fume and clogging with the residue** while feeding solder from the underside of the tip.

Impact of flux fume: High



Impact of flux fume: Low



* Image for illustration purpose

Stabilizing the Quality by Automatic Solder Feeding

With the use of auto-solder feeder HAKKO 373, the amount of solder feed can be controlled by feed "time" and feed "speed".

Feeding the specified amount of solder at the specified interval helps eliminate "excess solder" and "inconsistent solder amount" but also helps achieve stable soldering quality.

Easy Adjustment of the Solder Feeding Position

The position of solder feeding is critical to soldering quality. The new **tube unit** makes it easy to adjust the solder feeding position by holding the **guide pipe assembly** tightly with the two parts.



▲ The demonstration video

Tip Replacement without Removing the Tube Unit

Tip can be replaced without removing the tube unit. It saves the trouble of adjusting the position of solder feeding.



Quick and Sure Tip Cleaning with FT-720

The tip cleaner FT-720 cleans a tip quickly and surely even having the guide pipe assembly on a handpiece.



The Dedicated Receptacle

The dedicated receptacle makes the conventional iron holder accept the iron with the new auto-solder feed system.

