

FU-500 ESD SAFE FU-601 ESD SAFE

Auto-Soldering Unit

Tip not included



FU-500 標準

- Accurate solder feeding
- Supports solder diameters of 0.3 mm and up to 1.6 mm
- Solder feed error detection
- Equipped with countermeasures against solder ball splash as standard

FU-601 標準

- Easy tip replacement
- High performance composite tip
- Six presets tip-temperature function
- 300 W of ultra-high power

Packing List

FU-500	Main unit, Feeder unit (L or Straight type), Solder reel stand, Feeder cable, Tube units, Power cord, Instruction manual
FU-601	Station, Handpiece (FU-6001 or FU-6002), Iron unit fixing assembly, Tip adjustment jig units, Iron cable, Heat resistant pad, Connecting cable, Power cord, Flux protector, Feeder unit attachment screw, Instruction manual

Specifications

Model No.	FU-500
Power consumption	35 W
Compatible solder diameters	0.3 mm, 0.5 mm, 0.6(0.65) mm, 0.8 mm, 1 mm, 1.2 mm, 1.6 mm
Dimensions	145 mm (W) × 100 mm (H) × 230 mm (D)
Weight	2.3 kg

Model No.	FU-601
Power consumption	140 W/300 W
Temperature range	50 to 500°C
Preset temperature	6 settings
Dimensions	145 mm (W) × 107 mm (H) × 211 mm (D)
Weight	4 kg

Soldering Iron

Model No.	FU-6001	FU-6002
Total length	186 mm with 2.4XD tip for TX1 194 mm with 4XD tip for TX2	160 mm with 2.4XD tip for TX1 168 mm with 4XD tip for TX2
Weight*	163 g with 2.4XD tip for TX1 171 g with 4XD tip for TX2	165 g with 2.4XD tip for TX1 173 g with 4XD tip for TX2

* With iron unit fixing assembly

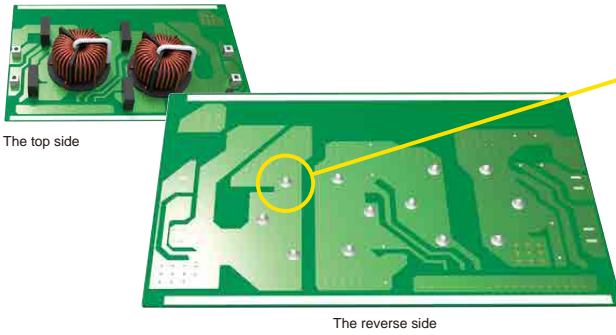
Optional Parts

* The accessories are required for initial set-up, such as a solder feed pulley unit, solder-feed guide set and teflon tube are not included. They must be ordered separately and adapted to use with the soldering iron and solder wire diameter.

Part No.	Name	Remarks
BX1000	Solder feed pulley unit/0.3 mm	
BX1001	Solder feed pulley unit/0.5 mm	
BX1002	Solder feed pulley unit/0.6 mm	
BX1003	Solder feed pulley unit/0.8 mm	
BX1004	Solder feed pulley unit/1 mm	
BX1005	Solder feed pulley unit/1.2 mm	
BX1006	Solder feed pulley unit/1.6 mm	
BX1007	Solder feed guide set/0.3 mm	
BX1008	Solder feed guide set/0.5 to 1 mm	
BX1009	Solder feed guide set/1.2 to 1.6 mm	
BX1010	Fluoroplastic tube/0.3 mm (qty 10)	
BX1011	Fluoroplastic tube/0.5 to 0.6 mm (qty 10)	
BX1012	Fluoroplastic tube/0.8 mm (qty 10)	
BX1013	Fluoroplastic tube/1 mm (qty 10)	
BX1014	Fluoroplastic tube/1.2 mm (qty 10)	
BX1015	Fluoroplastic tube/1.6 mm (qty 10)	
BX1023	Adapter assembly for TX1	
BX1029	Adapter assembly A for TX2	
BX1024	Nozzle assembly <A> for TX1	
BX1025	Nozzle assembly for TX1	
BX1026	Nozzle assembly <C> for TX1	
BX1030	Nozzle assembly <D> for TX2	
BX1031	Nozzle assembly <E> for TX2	
CX1000	Slide unit	
CX1001	Slide unit for drag soldering	
CX1002	Temperature probe	
CX1003	Cleaner	

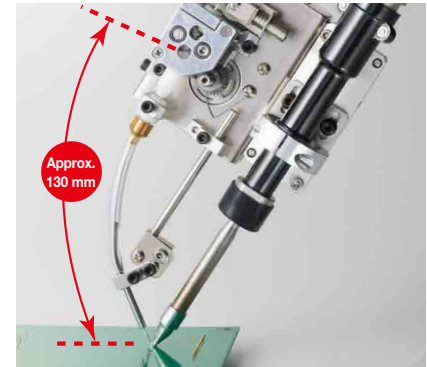
Features

300 W of ultra-high power FU-601 is added to Auto-Soldering System.



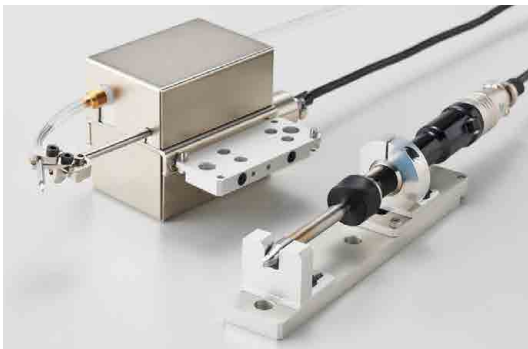
Accurate solder feeding

The solder feed unit is closer to the iron.



Easy tip replacement

The position of the tip end can be easily adjusted using the tip adjustment jig unit included with FU-601.



Two types of soldering irons

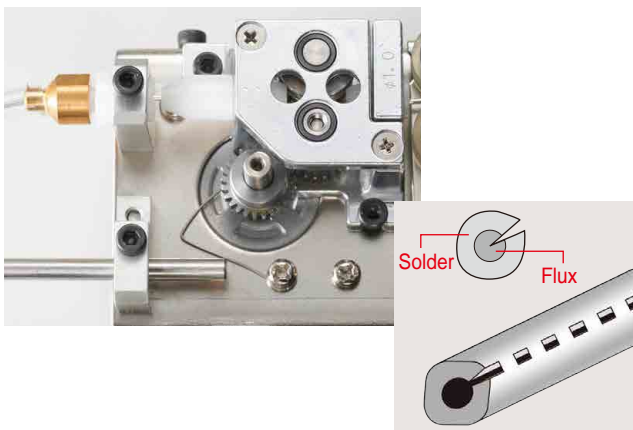
Straight iron FU-6001

L-shaped iron FU-6002



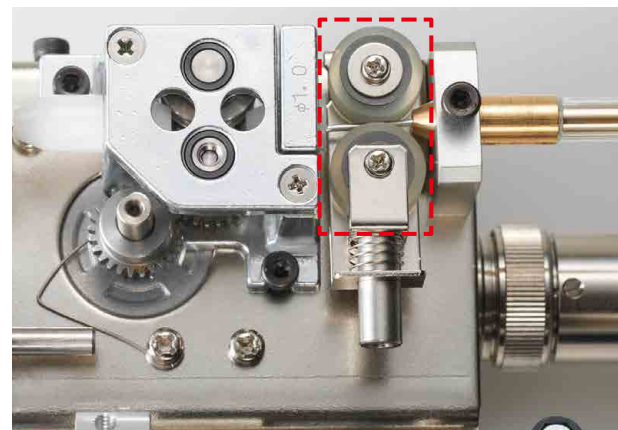
Countermeasures against solder ball splash

Equipped with a mechanism that perforates into the solder wire as standard.



Solder feed error detection

With an optical sensor for solder movement, FU-500 can detect solder clogging, slipping and the end of the roll.



Auto-Soldering Unit

Optional Parts and Accessories

Slide unit

This unit allows the soldering unit vertical movement with external air.



No. CX1000

Slide unit (for drag soldering)

This unit absorbs height variation.



No. CX1001

Tip cleaner

The brush removes excess solder and flux carbides.



No. CX1003

Temperature probe

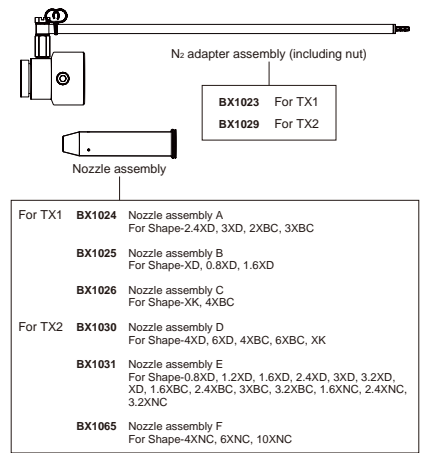
The probe makes tip temperature measurement easy.



No. CX1002

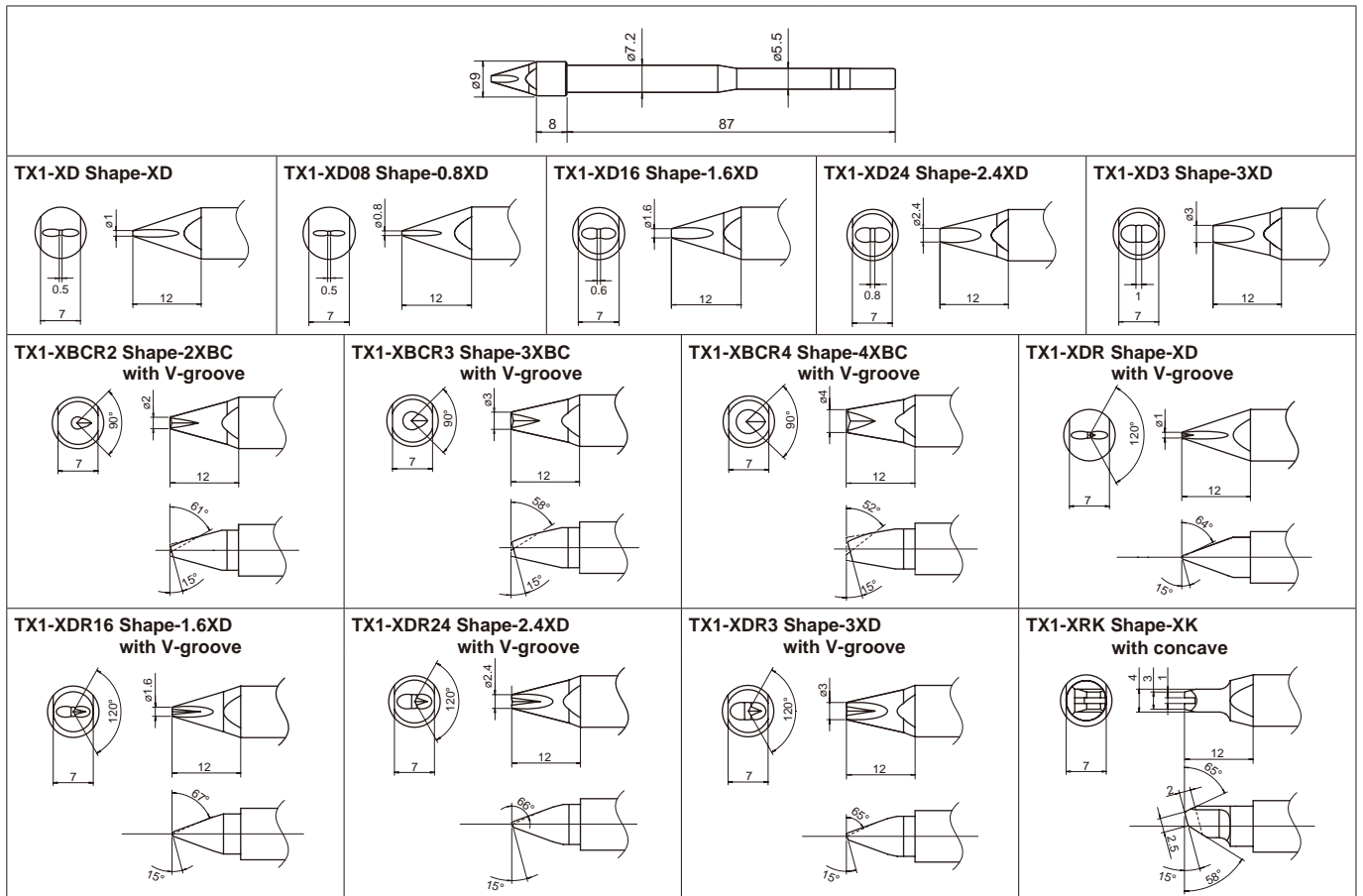
N₂ adapter assembly

Simply attach the optional N₂ adapter to the iron and install a nozzle assembly that matches the tip to perform N₂ soldering.



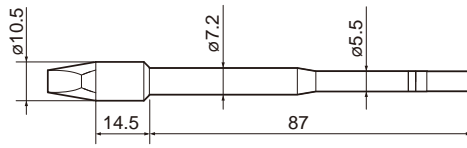
Optional Tips for 140 W

Unit: mm



Optional Tips for 300 W

Unit: mm



<p>TX2-XD08 Shape-0.8XD TX2-XDF08*</p>	<p>TX2-XD16 Shape-1.6XD TX2-XDF16*</p>	<p>TX2-XD24 Shape-2.4XD TX2-XDF24*</p>	<p>TX2-XD3 Shape-3XD</p>	<p>TX2-XD32 Shape-3.2XD TX2-XDF32*</p>
<p>TX2-XD4 Shape-4XD TX2-XDF4*</p>	<p>TX2-XD6 Shape-6XD TX2-XDF6*</p>	<p>TX2-XDRF12* Shape-1.2XD with V-groove</p>	<p>TX2-XDRF16* Shape-1.6XD with V-groove</p>	<p>TX2-XDRF24* Shape-2.4XD with V-groove</p>
<p>TX2-XDR3 Shape-3XD with V-groove</p>	<p>TX2-XDRF32* Shape-3.2XD with V-groove</p>	<p>TX2-XDR4 Shape-4XD with V-groove TX2-XDRF4*</p>	<p>TX2-XDR6 Shape-6XD with V-groove TX2-XDRF6*</p>	<p>TX2-XDR1632 Shape-XD with concave</p>
<p>TX2-XBCR16 Shape-1.6XBC with V-groove</p>	<p>TX2-XBCR24 Shape-2.4XBC with V-groove</p>	<p>TX2-XBCR3 Shape-3XBC with V-groove</p>	<p>TX2-XBCR32 Shape-3.2XBC with V-groove</p>	<p>TX2-XBCR4 Shape-4XBC with V-groove</p>
<p>TX2-XBCR6 Shape-6XBC with V-groove</p>	<p>TX2-XNC16 Shape-1.6XNC</p>	<p>TX2-XNC24 Shape-2.4XNC</p>	<p>TX2-XNC32 Shape-3.2XNC</p>	<p>TX2-XNC40 Shape-4XNC</p>
<p>TX2-XNC60 Shape-6XNC</p>	<p>TX2-XNC100 Shape-10XNC</p>	<p>TX2-XRK Shape-XK with concave</p>	<p>TX2-XRK1040 Shape-XK with concave</p>	<p>TX2-XRK1545 Shape-XK with concave</p>
<p>TX2-XRK2055 Shape-XK with concave</p>	<p>TX2-XRK3065 Shape-XK with concave</p>			

* Pretinning on one side only.