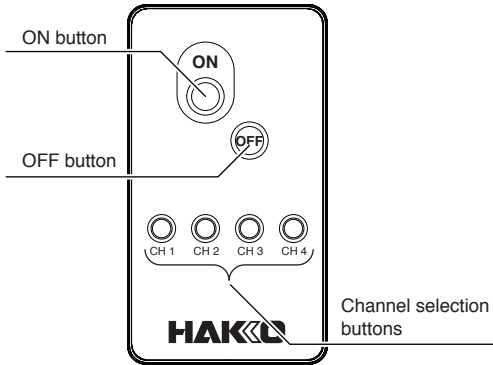




4. OPERATION

● Operation of the remote control

HAKKO FA-431 can be operated using the remote control.



The remote control has the following buttons:

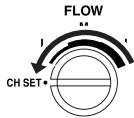
- **ON button**  
Starts the fan of the HAKKO FA-431.
- **OFF button**  
Stops the fan of the HAKKO FA-431.
- **Channel selection buttons (CH1 to CH4)**
  - Sets the channel of the remote control to the same channel as the HAKKO FA-431 main unit.
  - When one of the channel selection buttons (channels CH1 to CH4 are selectable) is held pressed together with the OFF button for 2 seconds or longer, sets the channel of the remote control itself to the pressed channel.

※When the channels of the remote control and the HAKKO FA-431 are the same, pressing the remote control's ON button will cause the fume extractor to operate. (Both units are initially set to channel CH1.)

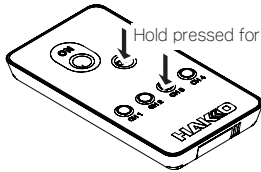
● How to set the channel

Example : Setting to channel 3

1. Set the flow selection switch of the HAKKO FA-431 to CH SET.



2. While holding the OFF button of the remote control pressed, press CH3 and hold both buttons pressed for approximately 2 seconds.

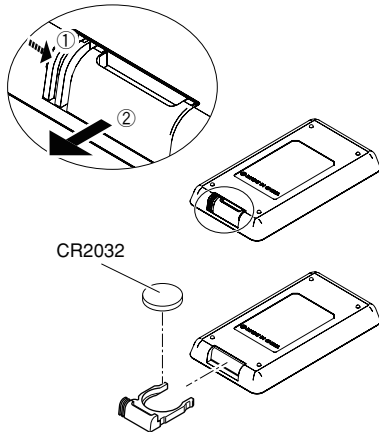


3. When channel setting has been completed, the LED on the main unit will blink twice and the buzzer will sound the same number of times as the set channel.

**CAUTION**  
If the above procedure is performed without setting the main unit's flow selection switch to CH SET, only the channel of the remote control will be changed and operation by remote control cannot be performed. If this occurs, perform the channel setting procedure again.

※When using multiple HAKKO FA-431 units, all fume extractors set to the same channel as the remote control will operate when the remote control is used. Operation of fume extractors according to the application can be performed by changing the channel setting of the fume extractors as necessary.

**CAUTION**  
If the remote control stops operating completely, it might be because the battery (CR2032) is completely exhausted. Replace the battery.



5. MAINTENANCE

Performing proper and periodic maintenance extends the product life. Wear of the product will differ depending on work environment, the quality and quantity of the solder and flux. Apply the following service procedure as dictated by the conditions of the usage.

● Filter replacement timing

**NOTE:**  
When replacing the filter, please be performed in a state in which the fan has stopped.

6. TROUBLE SHOOTING GUIDE

● Nothing happens when the power switch is turned on.

- CHECK** : Is the power cord disconnected ?  
**ACTION** : Connect it.
- CHECK** : Is the main filter set properly ?  
**ACTION** : Fit the main filter properly before turning on the power switch again.
- CHECK** : Is the flow control set to CH SET ?  
**ACTION** : Adjust the flow suitable for working environment by using the flow selection switch.

● Even if a remote control button is pressed, the fume extractor does not operate.

- CHECK** : Is the flow control set to CH SET ?  
**ACTION** : Adjust the flow suitable for working environment by using the flow selection switch.
- CHECK** : Are the remote control and HAKKO FA-431 set to different channels?  
**ACTION** : Set both units to the same channel.
- CHECK** : Is the battery of the remote control exhausted?  
**ACTION** : Replace the battery.

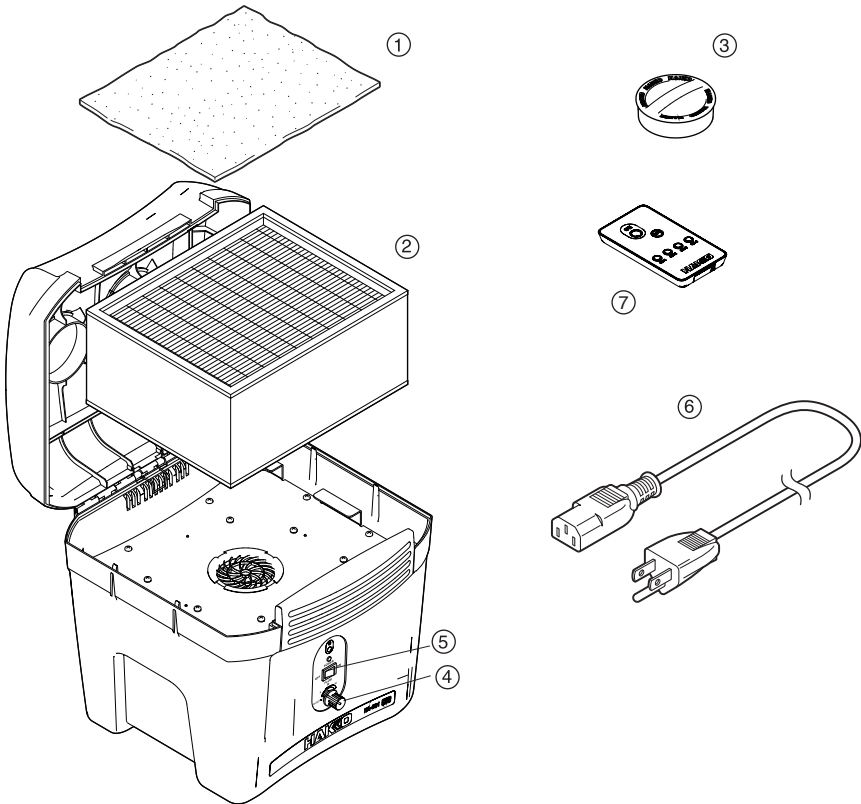
● Remote control channel cannot be set.

- CHECK** : Is the flow selection switch set to a setting other than CH SET?  
**ACTION** : Set the flow selection switch to CH SET.
- CHECK** : Is the battery of the remote control exhausted?  
**ACTION** : Replace the battery.

※ 各言語（日本語、英語、中国語、フランス語、ドイツ語、韓国語）の取扱説明書は以下のURL、HAKKO Document Portalからダウンロードしてご覧いただけます。  
(商品によっては設定の無い言語がありますが、ご了承ください)  
\* 各國語言(日語,英語,中文,法語,德語,韓語)的使用說明書可以通過以下網站的HAKKO Document Portal 下載參閱。  
(有一部分的產品沒有設定外語對應,請見諒)  
\* Instruction manual in the language of Japanese, English, Chinese, French, German and Korean can be downloaded from the HAKKO Document Portal.  
(Please note that some languages may not be available depending on the product.)

<https://doc.hakko.com>

7. PARTS LIST



7. PARTS LIST

●HAKKO FA-431

Item No.	Part No.	Part Name	Specifications
①	A5034	Pre-filter	10 pcs.
②	A5033	Main filter	
③	B3619	Cap	
④	B1486	Knob	
⑤	B2852	Power switch	
⑥	B2421	Power cord, 3 wired cord but no plug	220 - 240V
	B2422	Power cord, 3 wired cord & BS plug	India
	B2424	Power cord, 3 wired cord& European plug	220V KTL , 230V CE
	B2425	Power cord, 3 wired cord & BS plug	230V CE , U.K.
	B2426	Power cord, 3 wired cord & Australian plug	
	B2436	Power cord, 3 wired cord & Chinese plug	China
	B3508	Power cord, 3 wired cord & American plug (B)	
	B3550	Power cord, 3 wired cord & SI plug	
	B3616	Power cord, 3 wired cord & BR plug	
⑦	B3641	Power cord, 3 wired cord & American plug (U)	U.S.A.
	C5035	Remote control	

●Option

Item No.	Part No.	Part Name	Specifications
①	C1571	Duct set / Rectangular nozzle	Duct (1) / Adapter (1) Rectangular nozzle(1) / Net (1)
②	C1572	Duct set / Round nozzle	Duct (1) / Adapter (1) Round nozzle (1) / Net (1)
③	B3642	Duct	φ 55 mm
④	B3620	Adapter	
⑤	B3621	Adapter	For 3 inch
⑥	B3622	Rectangular nozzle	
⑦	B3623	Round nozzle	
⑧	B2418	Bench top hood	
⑨	B3625	Net	5 pcs.
⑩	B2410	Duct	For 3 inch (φ 75 mm)
⑪	B2416	Duct band	Set of 2
⑫	A5035	Sub-filter	5 pcs.
⑬	A5036	Sub filter / for rectangular nozzle	20 pcs.
⑭	A5037	Sub filter / for round nozzle	20 pcs.
⑮	B5146	Filter case / for rectangular nozzle	
⑯	B5147	Filter case / for round nozzle	

