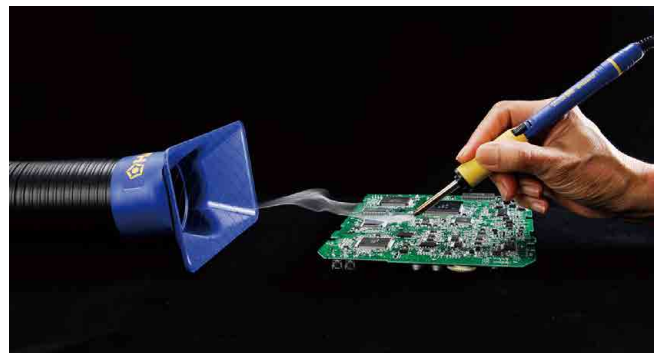


FA-430 ESD SAFE

Air-Purifying Fume Extractor



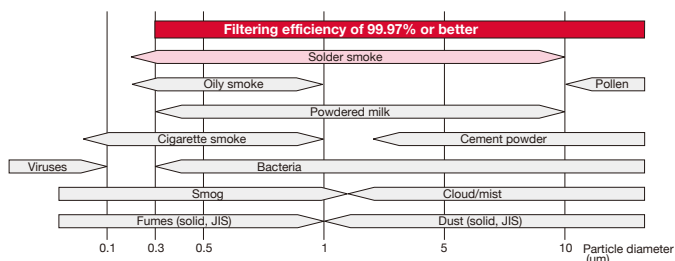
- HEPA filter (High Efficiency Particulate Air Filter)
- Filters out 99.97% of particles greater than 0.3 μm
- Recommended for quiet laboratory and office



Features of FA-430

Filter efficiency is 99.97% of particles greater than 0.3 μm (HEPA filter).

Aerosol particle diameter range



NOTE: Filter efficiency is an initial value of collection efficiency based on counting method for airborne dust collected by a single plate of filter (unfolded).

Packing List

FA-430	Main unit, Power cord, Cap, Main filter, Pre-filter (qty 10), Instruction manual
--------	----------------------------------------------------------------------------------

* Ducts are optional parts.

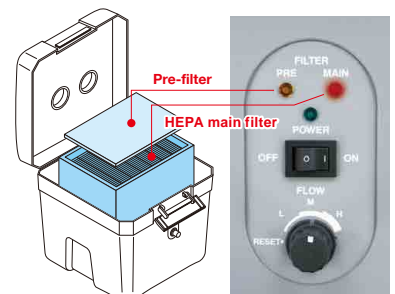
Filter replacement notification function

Pre-filter

When the pre-filter is 80% clogged or has been used for 200 hours, the orange indicator flashes on and off.

HEPA main filter

When the 10th pre-filter needs replacing, the orange and red lamps flash on and off.



Specifications

Model No.	FA-430	
Power consumption	110 W	
Noise level*	50 dB (A) (MEDIUM mode)	
Suction capacity**	HIGH	4.7 m ³ /min.
	MEDIUM	3.7 m ³ /min.
	LOW	2.8 m ³ /min.
Filtering efficiency	HIGH	99.96% (0.3 μm)***
	MEDIUM	99.97% (0.3 μm)***
	LOW	99.97% (0.3 μm)***
Static pressure	1500 Pa	
Duct set (sold separately)****	ø55 mm x 1.2 m (ESD SAFE)	
Dimensions	330 (W) x 366 (H) x 343 (D) mm	
Weight	7.5 kg	

* Measured at a distance of 1 meter from the face of the unit in an anechoic chamber.

** When using two ducts

*** It is an initial value of collection efficiency based on counting method for airborne dust collected by a single plate of filter (unfolded).

**** Nets in duct sets are not protected against electrostatic discharge.

FA-431 ESD SAFE

Air-Purifying Fume Extractor

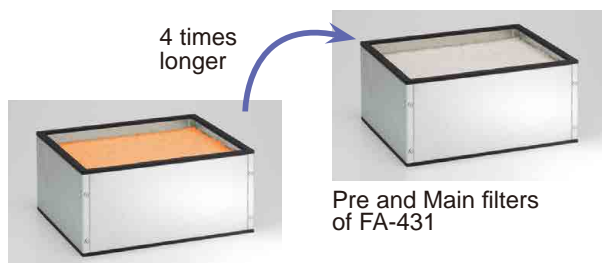


- Excellent cost performance filter
- Filters out 97% of particles greater than 0.3 μm
- Optional sub-filters extend the life of Pre and Main filters
- Ideal for factories with a lot of soldering work



Features of FA-431

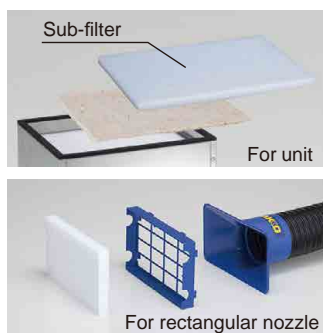
The life of pre-filter and main filter will be approximately 4 times* longer.



Pre and Main filters of FA-430

Pre and Main filters of FA-431

With the use of sub-filter, it will be approximately 10 times* longer.



Remote control equipped
Very easy to switch ON/OFF



* The filter life will be differ depending on the work environments and work conditions.

Packing List

FA-431	Main unit, Power cord, Remote control, Cap, Main filter, Pre-filter (qty 10), Instruction manual
---------------	--------------------------------------------------------------------------------------------------

* Ducts are optional parts.

Specifications

Model No.		FA-431
Power consumption		110 W
Noise level*		50 dB (A) (MEDIUM mode)
Suction capacity**	HIGH	4.7 m ³ /min.
	MEDIUM	3.7 m ³ /min.
	LOW	2.8 m ³ /min.
Filtering efficiency	HIGH	97% ($\geq 0.3 \mu\text{m}$)
	MEDIUM	
	LOW	
Static pressure		1500 Pa
Duct set (sold separately)***		$\varnothing 55 \text{ mm} \times 1.2 \text{ m}$ (ESD SAFE)
Dimensions		330 (W) \times 366 (H) \times 343 (D) mm
Weight		7.2 kg

* Measured at a distance of 1 meter from the face of the unit in an anechoic chamber.

** When using two ducts

*** Nets in duct sets are not protected against electrostatic discharge.

Air-Purifying Type

Common Features of FA-430 and FA-431

Quiet operation and powerful suction

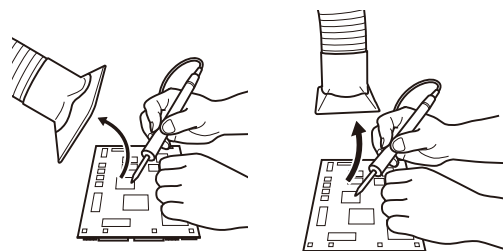
	FA-430/431		Previous model (HAKKO 421)	
	Noise level dB (A)	Air volume m³/min.	Noise level dB (A)	Air volume m³/min.
HIGH	53	4.7	60*	3.2*
MEDIUM	50	3.7		
LOW	44	2.8		

*Values measured when the unit was used with a 60 Hz power supply.

Flexible ducts and compact body for perfect placement



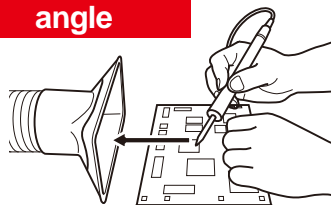
Movement of smoke is affected by the surrounding environment



If the duct is mounted at an angle above the workpiece, it is affected by air conditioning.

If the duct is mounted directly above, it can be difficult to see the workpiece.

Recommended angle



Duct is mounted on the worktable to provide excellent suction performance.

Freestanding ducts



Perfect placement provides suction where you need it.

Option

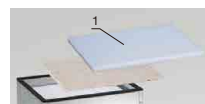
Part No.	Name	Specifications
C1571	Duct Set	With rectangular nozzle
C1572	Duct Set	With round nozzle
A5035	Sub-filter	For FA-431, set of 5
A5036	Sub-filter for rectangular nozzle	For FA-431, set of 20
A5037	Sub-filter for round nozzle	For FA-431, set of 20
B5146	Filter case for rectangular nozzle	For FA-431
B5147	Filter case for round nozzle	For FA-431



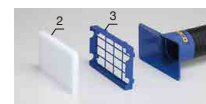
No.C1571



No.C1572



1: No.A5035



2: No.A5036
3: No.B5146



4: No.A5037
5: No.B5147

FA-400 ESD SAFE

Desktop Type Smoke Absorber



- Desktop solder smoke absorber that can be mounted horizontally or vertically
- An optional arm stand makes a third mounting position available.

2 Way Plus Placement

Vertically mounted:



Horizontally mounted:



Using a stand (option):



Packing List

FA-400	Unit, Filter, Instruction manual
--------	----------------------------------

Specifications

Model No.	FA-400
Power consumption	50 Hz: 15 W (100 V), 18 W (110 V), 19 W (220 V), 22 W (230 V), 24 W (240 V) 60 Hz: 13 W (100 V), 15 W (110 V), 19 W (120 V), 16 W (220 V), 18 W (230 V), 19 W (240 V)
Noise level*	50 Hz: 48 dB 60 Hz: 51 dB
Suction capacity**	Vertically: 1 m ³ /min. (50 Hz), 1.1 m ³ /min. (60 Hz) (max.) Horizontally: 0.4 m ³ /min. (50 Hz), 0.5 m ³ /min. (60 Hz) (max.)
Air velocity	Vertically: 1 m/sec. (50 Hz), 1.1 m/sec. (60 Hz) Horizontally: 2.6 m/sec. (50 Hz), 2.9 m/sec. (60 Hz)
Filter size	130 (W) × 130 (H) × 10 (D) mm
Dimensions	166 (W) × 212 (H) × 113 (D) mm
Weight***	0.91 kg

* Measured at a distance of 1 m from the face of the unit

** Measured with a filter present

*** Without cord

Option

Part No.	Name	Specifications
C1568	Arm stand	With knobs

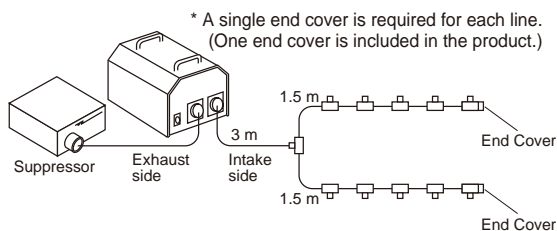
494

Smoke Absorbing System



- Soldering smoke absorber for production-line use that enables the exhausting of fumes to an outdoor location
- Equipped with a suppressor to reduce exhaust noise during operation
- Up to 10 soldering irons can be connected to one unit

Example of Connections



Packing List

494	Unit, Filter case, Filter cap, Pre-filter (5 pcs), Duct (3 m), End cover, Main filter (5 pcs), Inlet socket, Exhaust duct (5 m), Nylon strap, Suppressor, Absorption pipe set, Instruction manual
------------	---------------------------------------------------------------------------------------------------------------------------------------------------------------------------------------------------

*When ordering HAKKO 494, specify the part number of the absorption pipe set.

Option

Part No.	Name	Specifications
C1540	Absorption pipe set <R>	Any with a handle ø16 mm or smaller
B1246	Parallel piping joint	—

Specifications

Model No.	494
Power consumption	50 Hz: 150 W 60 Hz: 200 W
Noise level*	With hose: 55 dB Without hose: 71 dB
Suction capacity	50 Hz: 1.56 m ³ /min. 60 Hz: 1.82 m ³ /min.
Static pressure	50 Hz: 2.3 kPa (240 mmAq.) 60 Hz: 3.2 kPa (325 mmAq.)
Dimensions**	322 (W) × 300 (H) × 386 (D) mm
Weight***	18 kg

* Measured at a distance of 1 m from the face of the unit.

** Without handle and cord

*** Unit only